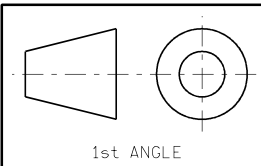



- NOTES:
- 1. MATERIAL: ZA GOLD (NON-ASBESTOS MATERIAL)
 - 2. TOLERANCES $\pm 0,1\text{mm}$ UNLESS OTHERWISE STATED.
 - 3. 10mm HOLES REAMED TO FIT BRAKE PAD & BRAKE SHOE JOINT DOWEL PIN AS PER DGN. 18.48/U1/6448 Sht. 4

CONTROLLED COPY



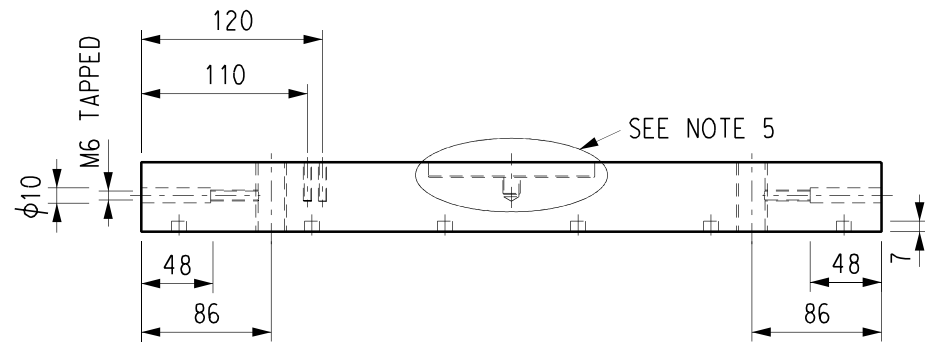
1st ANGLE

PRELIMINARY

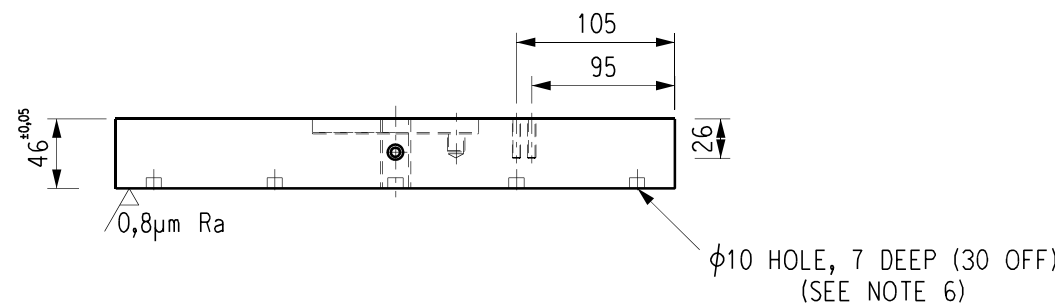
18	0a		FIRST ISSUE, NEW DRAWING CREATED AS PER NOTIF. 25713745							U1/6448 Sht. 1-4	BRAKE PAD, BACKING PLATE & DOWEL PIN DETAILS
D.O.	REV	DATE	** REVISION **	REV BY	CHKD BY	AUTH BY	APP BY	KKS APP	48/	REFERENCE DRAWINGS	
AUTHORISED FOR ESKOM BY:			CLASSIFICATION	DRAKENSBURG PUMPED STORAGE SCHEME DETAIL DRAWING UNIT 1 GENERATOR BRAKE PAD							
202001499											
2021-11-17											
CODIFICATION BY:											
APPROVED BY:											
B.C. Dumema 20110219											
2021-11-18											
CHECKED BY:											
2021/11/19											
CREATED BY:											
S. MERVIN 2021-06-25											
SCALE	AS SHOWN		 Eskom ESKOM HOLDINGS SOC Ltd. REG No. 2002/015527/30	ESKOM DRAWING No.						SHT	REV
				18.48/U1/6448						2	0a

DRAWING CLASSIFICATION:
Controlled Disclosure

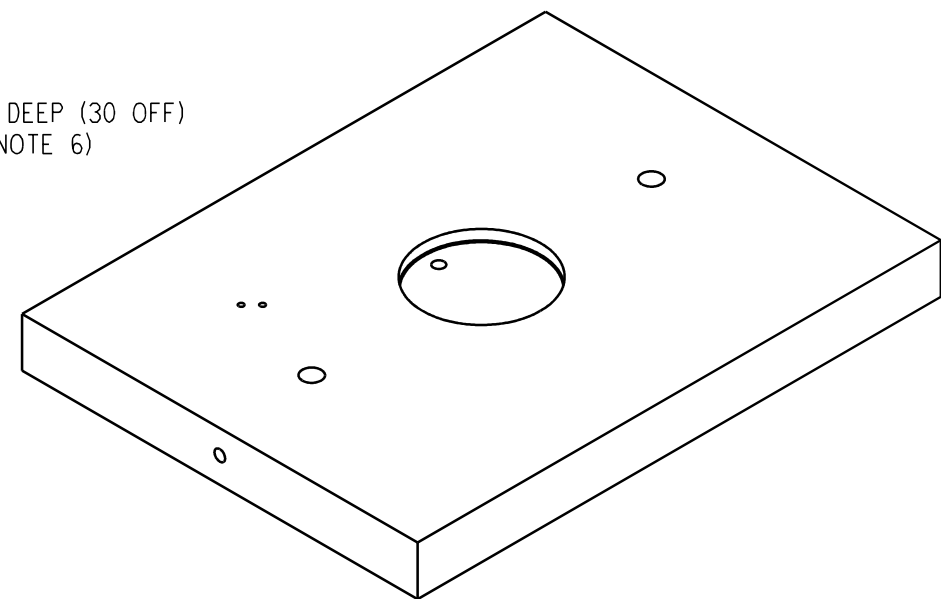
SIZE
GROOTTE A3L



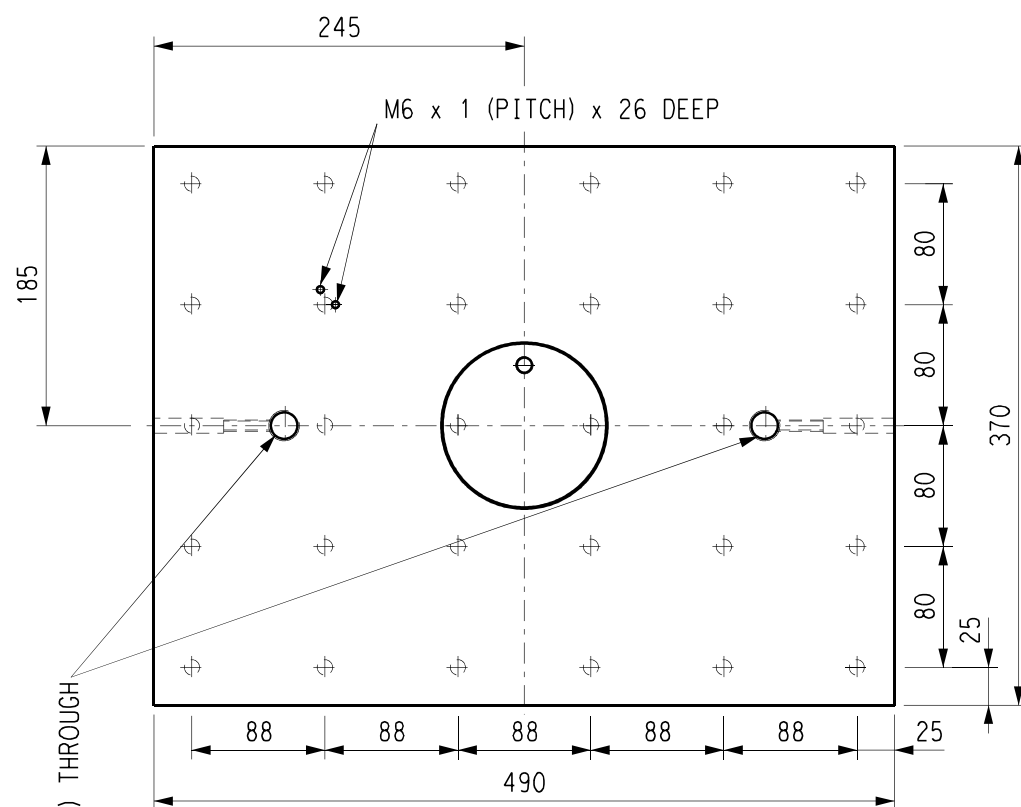
FRONT VIEW
SCALE 1:5



SIDE VIEW
SCALE 1:2



ISOMETRIC VIEW
SCALE N.T.S

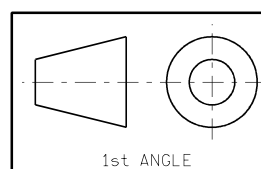


TOP VIEW
SCALE 1:5

NOTES:

1. MATERIAL: EN3A (BS 970:1955) / WERKSTOFF NR. 1.0402 / 070 M20 (070) (BS 970) / SAE/AISI 1020
2. SURFACE FINISHES TO BE 1,6µm Ra OR BETTER UNLESS OTHERWISE STATED.
3. TOLERANCES ±0,1mm UNLESS OTHERWISE STATED.
4. BREAK ALL SHARP EDGES WITH 1mm CHAMFER & REMOVE SLIVERS.
5. FOR BRAKE SHOE RECESS DETAILS, REFER TO DGN. 18.48/U1/6448 Sht. 4.
6. 10mm HOLES REAMED TO FIT BRAKE PAD & BRAKE SHOE JOINT DETAIL DOWEL PIN

CONTROLLED COPY



1st ANGLE

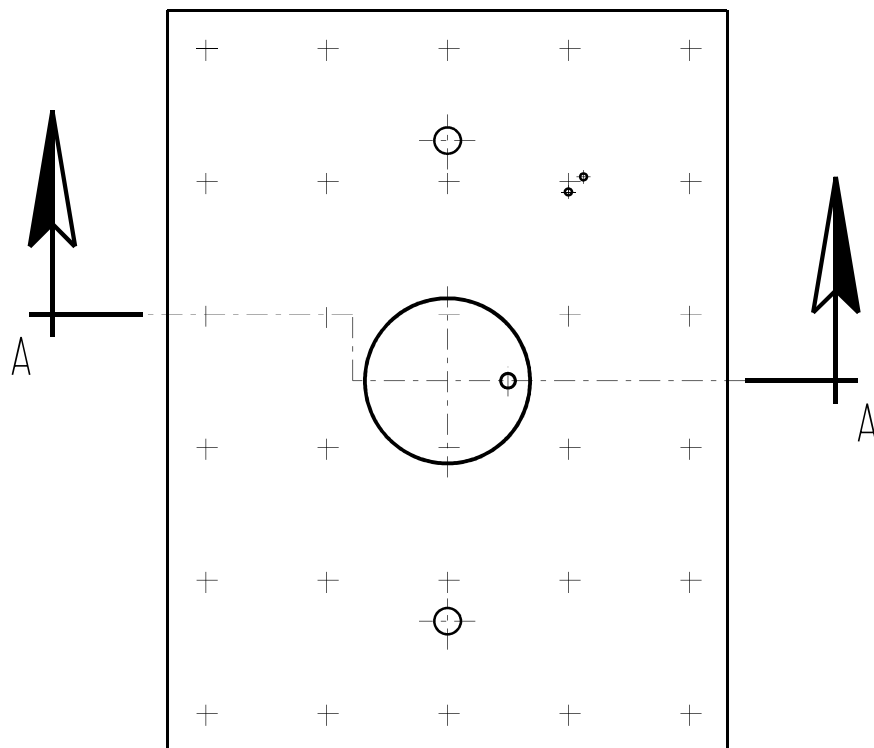
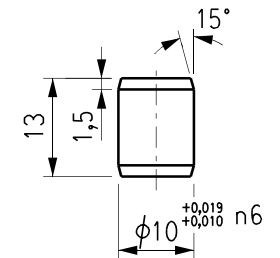
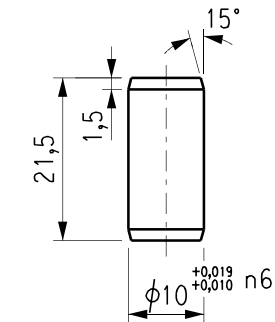
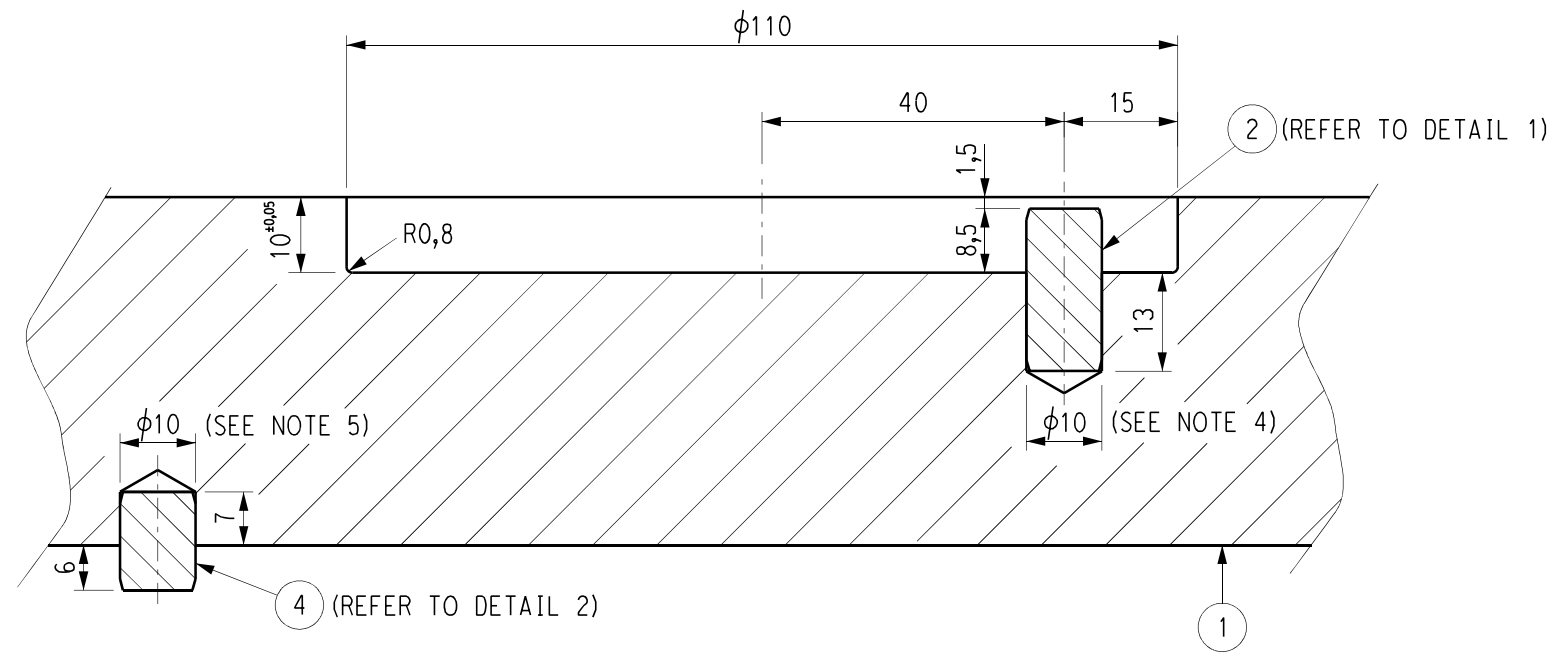
PRELIMINARY

18	0a	FIRST ISSUE, NEW DRAWING CREATED AS PER NOTIF. 25713745								U1/6448 Sht. 1-4	BRAKE PAD, BACKING PLATE & DOWEL PIN DETAILS		
D.O.	REV	DATE	** REVISION **	REV BY	CHKD BY	AUTH BY	APP BY	KKS APP	48/	REFERENCE DRAWINGS			
AUTHORISED FOR ESKOM BY: 202001499			CLASSIFICATION		DRAKENSBURG PUMPED STORAGE SCHEME DETAIL DRAWING UNIT 1 GENERATOR BRAKE PAD BACKING PLATE								
2021-11-17			PBS PATH 1 OMLA										
CODIFICATION BY:													
APPROVED BY: B. Dumama 20110219													
CHECKED BY: 2021-11-18													
CREATED BY: S. MERVIN 2021-06-25													
SCALE AS SHOWN			Eskom										
			ESKOM HOLDINGS SOC. Ltd. REG No. 2002/015527/30										
ESKOM DRAWING No.										18.48/U1/6448		SHT 3	REV 0a

DRAWING CLASSIFICATION:
Controlled Disclosure





SIZE
GROOTTE A3L

BILL OF MATERIALS				
ITEM	QTY	DESCRIPTION	MATERIAL	DIMENSIONS
1	1	BRAKE SHOE / BRAKE PAD BACKING PLATE	EN3A / WERKSTOFF NR. 1.0402	490 x 370 x 46
2	1	BRAKE SHOE & BRAKING DEVICE ASSEMBLY DOWEL PIN	HARDENED STEEL	φ10 x 21,5 L
3	1	BRAKE PAD	ZA GOLD	480 x 360 x 19
4	30	BRAKE PAD & BRAKE SHOE JOINT DOWEL PIN	CuZn39Pb3 / WERKSTOFF NR. 2.0401	φ10 x 13 L

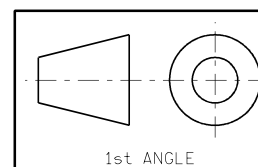


NOTES:

1. SURFACE FINISHES TO BE 1,6µm Ra OR BETTER, UNLESS OTHERWISE STATED
2. TOLERANCES ±0,1mm UNLESS OTHERWISE STATED.
3. BREAK ALL SHARP EDGES WITH 1mm CHAMFER & REMOVE SLIVERS.
4. 10mm HOLES REAMED TO FIT BRAKE SHOE & BRAKING DEVICE ASSEMBLY DOWEL PIN AS PER DETAIL 1.
5. 10mm HOLES REAMED TO FIT BRAKE PAD & BRAKE SHOE JOINT DETAIL DOWEL PIN AS PER DETAIL 2.
6. BRAKE SHOE & BRAKING DEVICE ASSEMBLY DOWEL PINS (ITEM 2) NOT TO BE MANUFACTURED.
7. BRAKE PAD & BRAKE SHOE JOINT DOWEL PINS (ITEM 4) TO BE MANUFACTURED WITH BRAKE PADS & BRAKE SHOES.

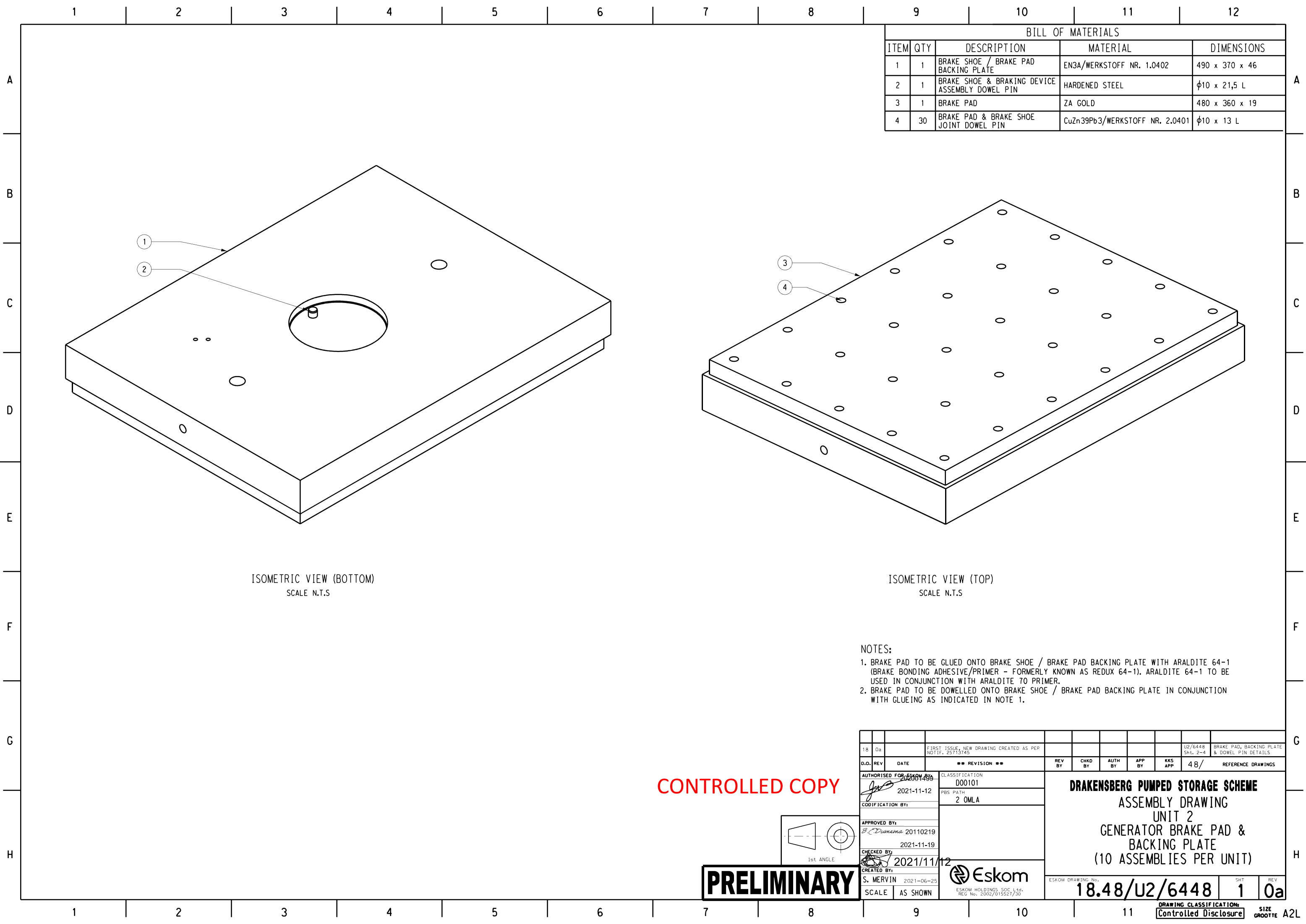
18	Oa		FIRST ISSUE, NEW DRAWING CREATED AS PER NOTIF. 25713745							U1/6448 Sht. 1-3	BREAK PAD & BACKING PLATE DETAILS
D.O.	REV	DATE	** REVISION **	REV BY	CHKD BY	AUTH BY	APP BY	KKS APP	48/	REFERENCE DRAWINGS	
AUTHORISED FOR ESKOM BY:  202001499 2021-11-12			CLASSIFICATION	<div>DRAKENSBERG PUMPED STORAGE SCHEME</div> <div>DETAIL DRAWING</div> <div>UNIT 1</div> <div>GENERATOR BRAKE PAD</div> <div>DOWEL PINS</div>							
CODIFICATION BY:			PBS PATH 1 OMLA								
APPROVED BY:  20110219 2021-11-15											
CHECKED BY:  2021/11/12											
CREATED BY: S. MERVIN 2021-06-25											
SCALE AS SHOWN			 Eskom ESKOM HOLDINGS SOC Ltd. REG No. 2002/015527/30	ESKOM DRAWING No. 18.48/U1/6448					SHT 4	REV Oa	

CONTROLLED COPY

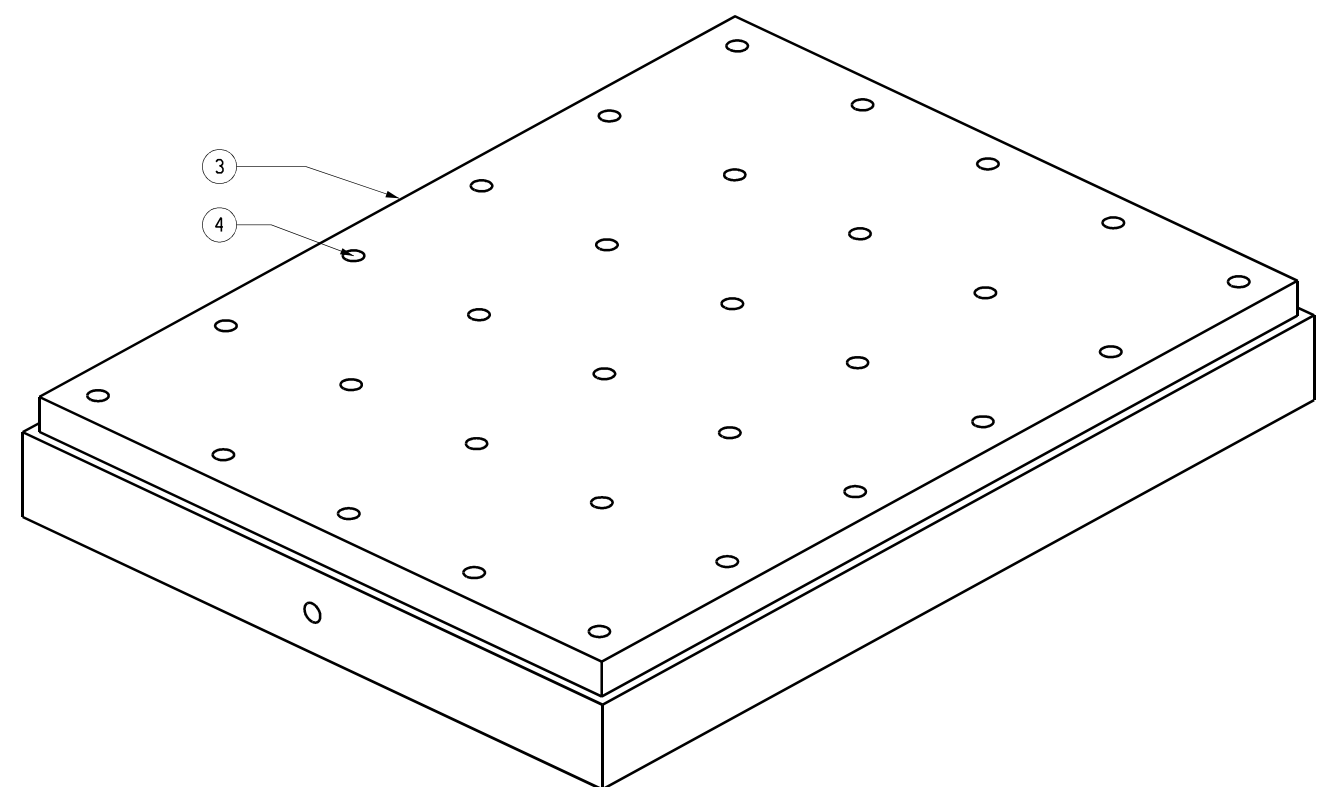


1st ANGLE

PRELIMINARY



ISOMETRIC VIEW (BOTTOM)
SCALE N.T.S

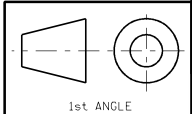


ISOMETRIC VIEW (TOP)
SCALE N.T.S

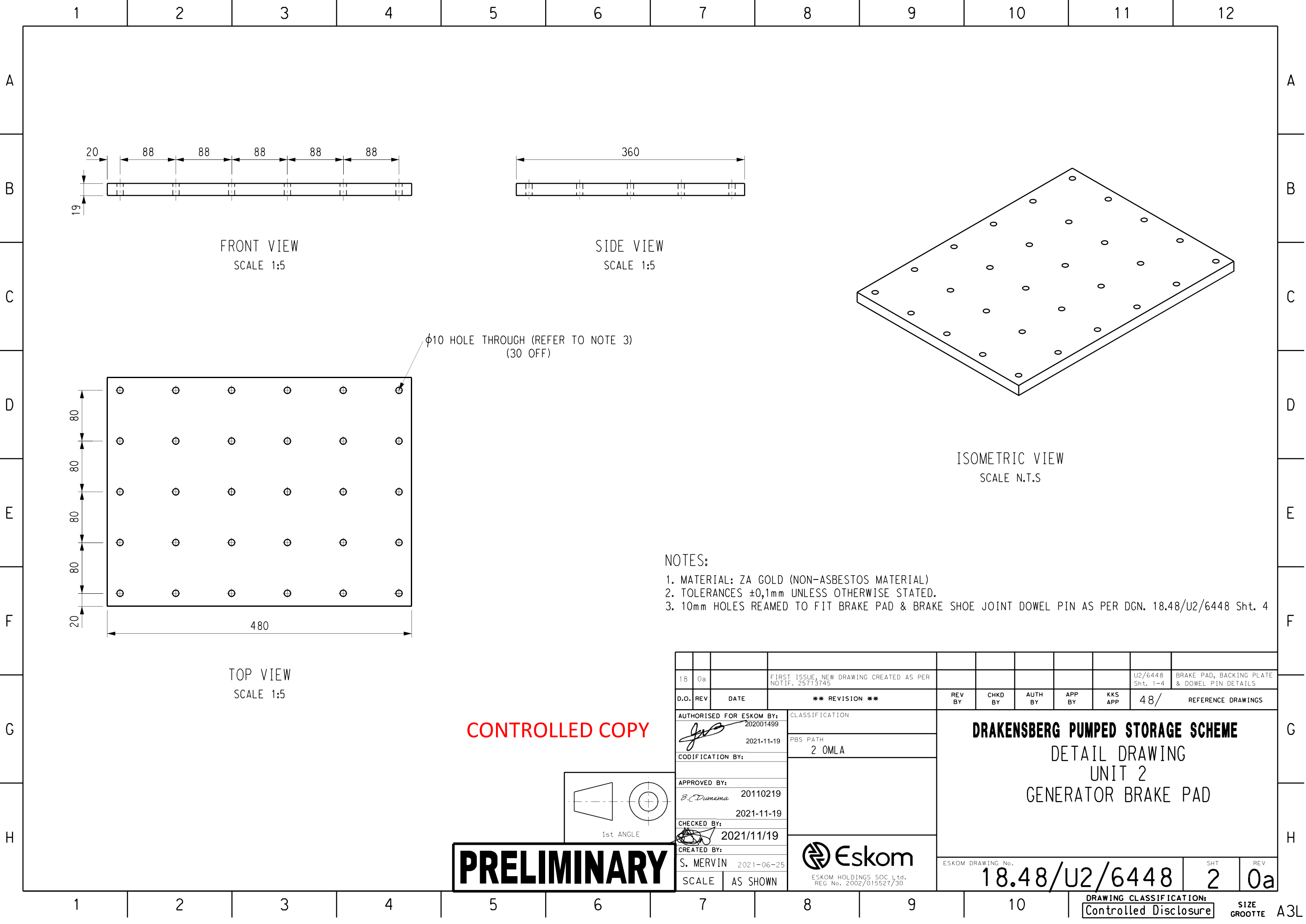
- NOTES:
- 1. BRAKE PAD TO BE GLUED ONTO BRAKE SHOE / BRAKE PAD BACKING PLATE WITH ARALDITE 64-1 (BRAKE BONDING ADHESIVE/PRIMER - FORMERLY KNOWN AS REDUX 64-1). ARALDITE 64-1 TO BE USED IN CONJUNCTION WITH ARALDITE 70 PRIMER.
 - 2. BRAKE PAD TO BE DOWELLED ONTO BRAKE SHOE / BRAKE PAD BACKING PLATE IN CONJUNCTION WITH GLUEING AS INDICATED IN NOTE 1.

18		0a	FIRST ISSUE, NEW DRAWING CREATED AS PER NOTIF. 25713745										U2/6448 Sht. 2-4		BRAKE PAD, BACKING PLATE & DOWEL PIN DETAILS		
D.O.		REV	DATE		** REVISION **				REV BY	CHKD BY	AUTH BY	APP BY	KKS APP	48/		REFERENCE DRAWINGS	
AUTHORISED FOR ESKOM BY:			CLASSIFICATION		<div>DRAKENSBERG PUMPED STORAGE SCHEME</div> <div>ASSEMBLY DRAWING</div> <div>UNIT 2</div> <div>GENERATOR BRAKE PAD & BACKING PLATE</div> <div>(10 ASSEMBLIES PER UNIT)</div>												
2021-11-12			D00101														
CODIFICATION BY:			PBS PATH														
2021-11-12			2 OMLA														
APPROVED BY:																	
2021-11-19																	
CHECKED BY:																	
2021/11/12																	
CREATED BY:																	
S. MERVIN			2021-06-25														
SCALE		AS SHOWN															

CONTROLLED COPY

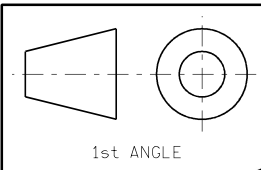


PRELIMINARY



- NOTES:
- 1. MATERIAL: ZA GOLD (NON-ASBESTOS MATERIAL)
 - 2. TOLERANCES $\pm 0,1\text{mm}$ UNLESS OTHERWISE STATED.
 - 3. 10mm HOLES REAMED TO FIT BRAKE PAD & BRAKE SHOE JOINT DOWEL PIN AS PER DGN. 18.48/U2/6448 Sht. 4

CONTROLLED COPY



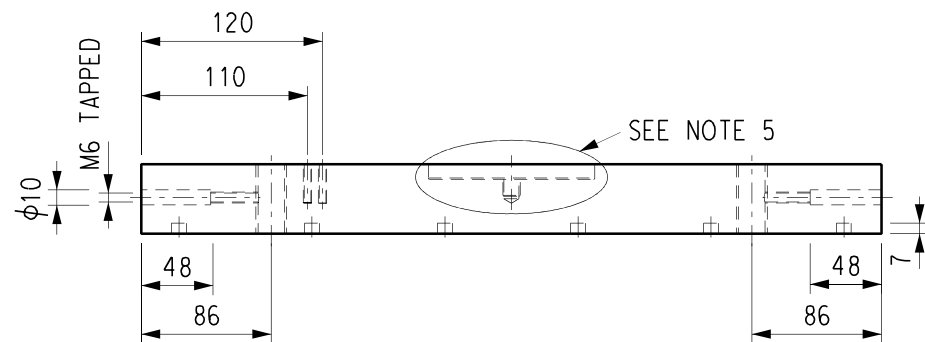
1st ANGLE

PRELIMINARY

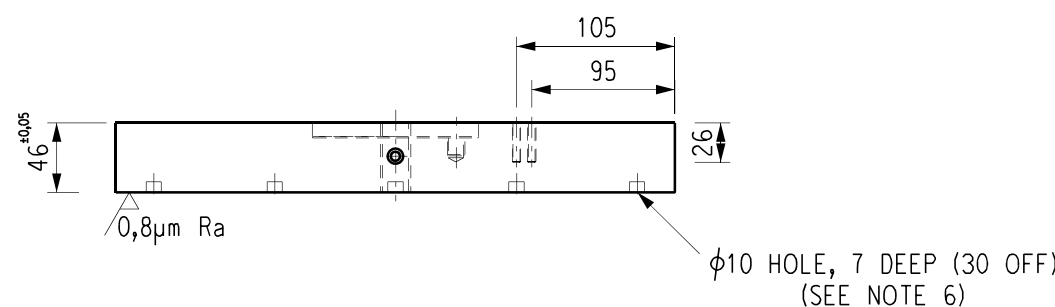
18	0a		FIRST ISSUE, NEW DRAWING CREATED AS PER NOTIF. 25713745							U2/6448 Sht. 1-4	BRAKE PAD, BACKING PLATE & DOWEL PIN DETAILS
D.O.	REV	DATE	** REVISION **	REV BY	CHKD BY	AUTH BY	APP BY	KKS APP	48/	REFERENCE DRAWINGS	
AUTHORISED FOR ESKOM BY:			CLASSIFICATION	<div>DRAKENSBERG PUMPED STORAGE SCHEME</div> <div>DETAIL DRAWING</div> <div>UNIT 2</div> <div>GENERATOR BRAKE PAD</div>							
<div>202001499</div>											
<div>2021-11-19</div>											
CODIFICATION BY:											
APPROVED BY:											
<div>B. C. Dumema</div>											
<div>20110219</div>											
<div>2021-11-19</div>											
CHECKED BY:											
<div>2021/11/19</div>											
CREATED BY:			PBS PATH								
<div>2 OMLA</div>											
S. MERVIN			2021-06-25	<div>ESKOM HOLDINGS SOC Ltd.</div> <div>REG No. 2002/015527/30</div>							
SCALE											
AS SHOWN											
ESKOM DRAWING No.				18.48/U2/6448				SHT		REV	
								2		0a	

DRAWING CLASSIFICATION:
Controlled Disclosure

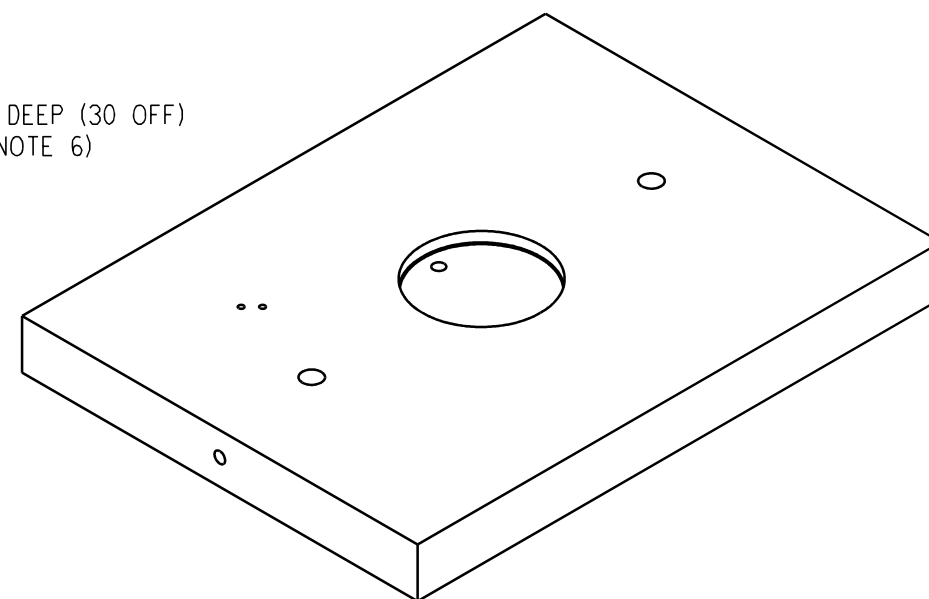
SIZE GROOTTE A3L



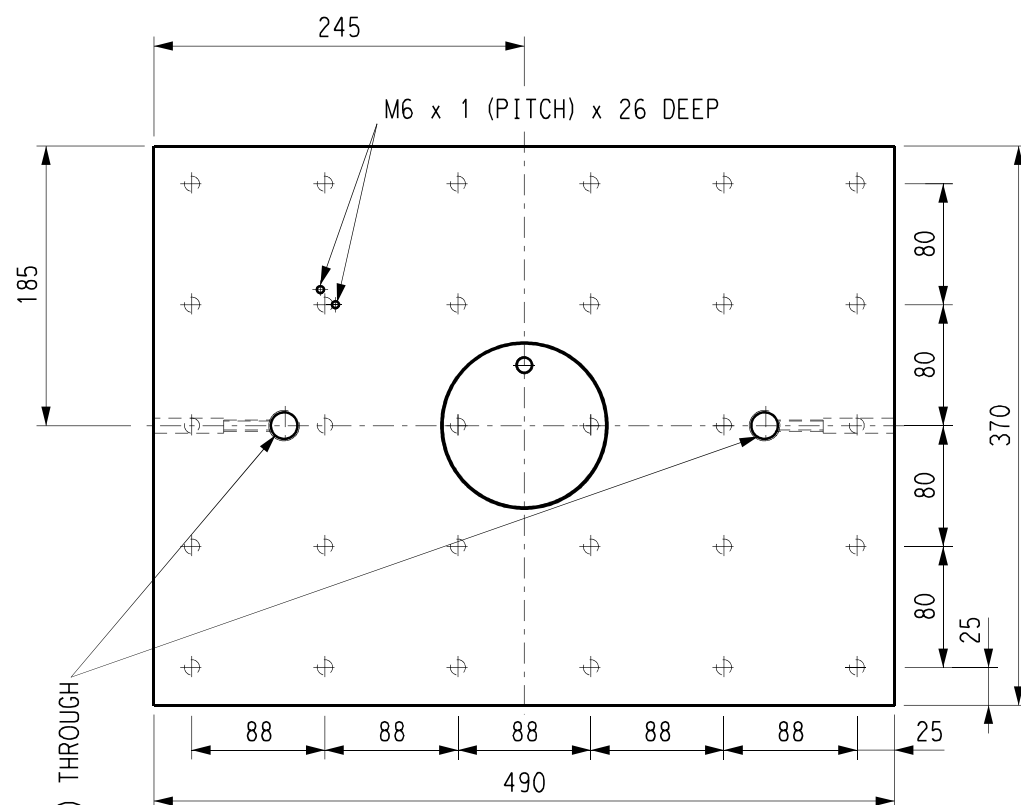
FRONT VIEW
SCALE 1:5



SIDE VIEW
SCALE 1:2



ISOMETRIC VIEW
SCALE N.T.S

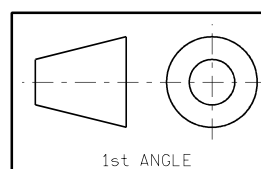


TOP VIEW
SCALE 1:5

NOTES:

1. MATERIAL: EN3A (BS 970:1955) / WERKSTOFF NR. 1.0402 / 070 M20 (070) (BS 970) / SAE/AISI 1020
2. SURFACE FINISHES TO BE 1,6µm Ra OR BETTER UNLESS OTHERWISE STATED.
3. TOLERANCES ±0,1mm UNLESS OTHERWISE STATED.
4. BREAK ALL SHARP EDGES WITH 1mm CHAMFER & REMOVE SLIVERS.
5. FOR BRAKE SHOE RECESS DETAILS, REFER TO DGN. 18.48/U2/6448 Sht. 4.
6. 10mm HOLES REAMED TO FIT BRAKE PAD & BRAKE SHOE JOINT DETAIL DOWEL PIN

CONTROLLED COPY



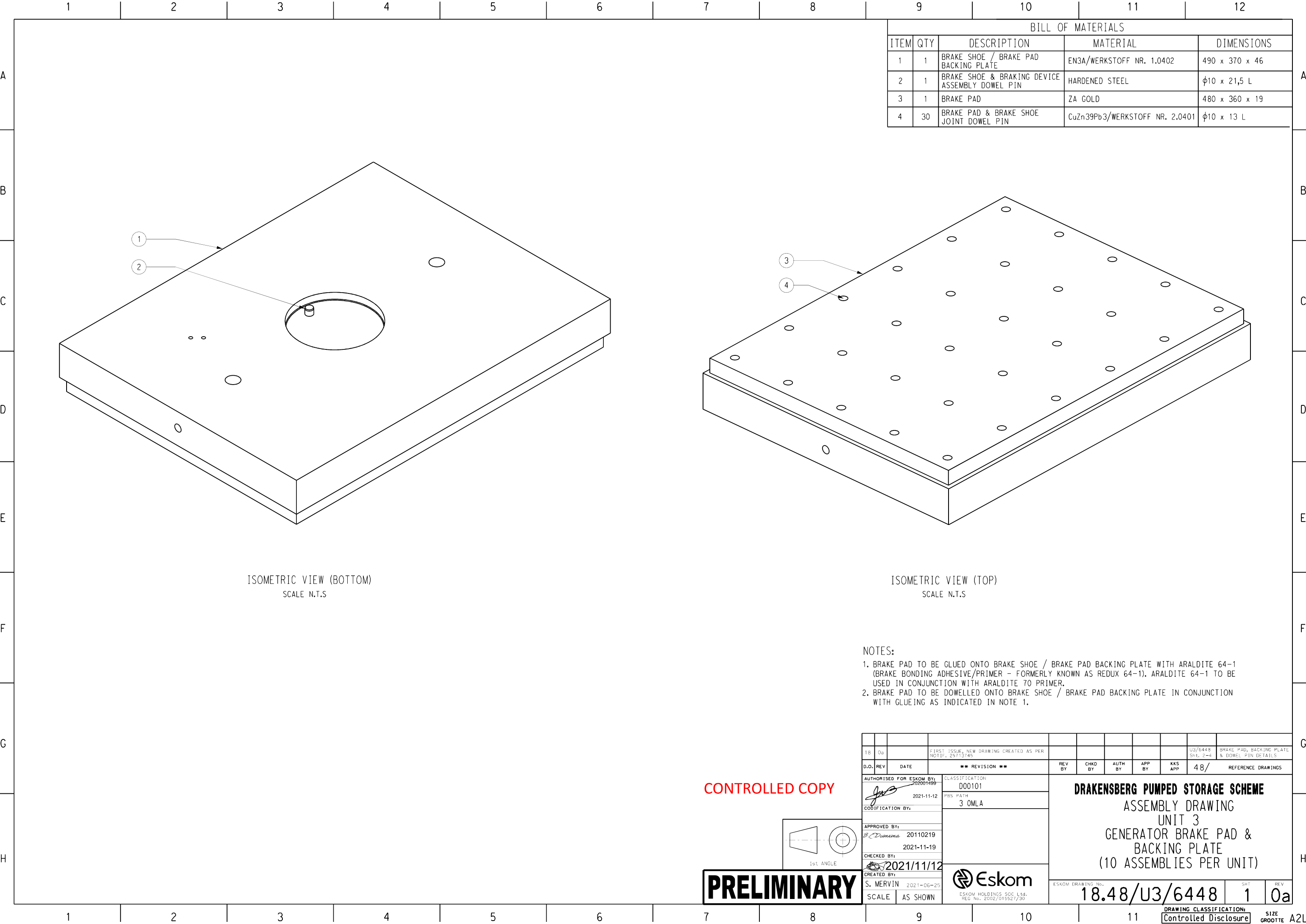
1st ANGLE

PRELIMINARY

18	0a	FIRST ISSUE, NEW DRAWING CREATED AS PER NOTIF. 25713745											U2/6448 Sht. 1-4	BRAKE PAD, BACKING PLATE & DOWEL PIN DETAILS	
D.O.	REV	DATE	** REVISION **			REV BY	CHKD BY	AUTH BY	APP BY	KKS APP	48/	REFERENCE DRAWINGS			
AUTHORISED FOR ESKOM BY:			CLASSIFICATION			DRAKENSBURG PUMPED STORAGE SCHEME DETAIL DRAWING UNIT 2 GENERATOR BRAKE PAD BACKING PLATE									
202001499			PBS PATH												
2021-11-19			2 OMLA												
CODIFICATION BY:															
APPROVED BY:			20110219			Eskom ESKOM HOLDINGS SOC. Ltd. REG No. 2002/015527/30									
B. C. Dumema			2021-11-19												
CHECKED BY:			2021/11/19												
CREATED BY:			S. MERVIN 2021-06-25												
SCALE		AS SHOWN										ESKOM DRAWING No.		SHT	REV
												18.48/U2/6448		3	0a

DRAWING CLASSIFICATION:
Controlled Disclosure

SIZE
GROOTTE A3L



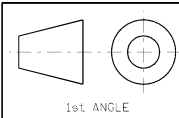
BILL OF MATERIALS				
ITEM	QTY	DESCRIPTION	MATERIAL	DIMENSIONS
1	1	BRAKE SHOE / BRAKE PAD BACKING PLATE	EN3A/WERKSTOFF NR. 1.0402	490 x 370 x 46
2	1	BRAKE SHOE & BRAKING DEVICE ASSEMBLY DOWEL PIN	HARDENED STEEL	φ10 x 21,5 L
3	1	BRAKE PAD	ZA GOLD	480 x 360 x 19
4	30	BRAKE PAD & BRAKE SHOE JOINT DOWEL PIN	CuZn39Pb3/WERKSTOFF NR. 2.0401	φ10 x 13 L

ISOMETRIC VIEW (BOTTOM)
SCALE N.T.S

ISOMETRIC VIEW (TOP)
SCALE N.T.S

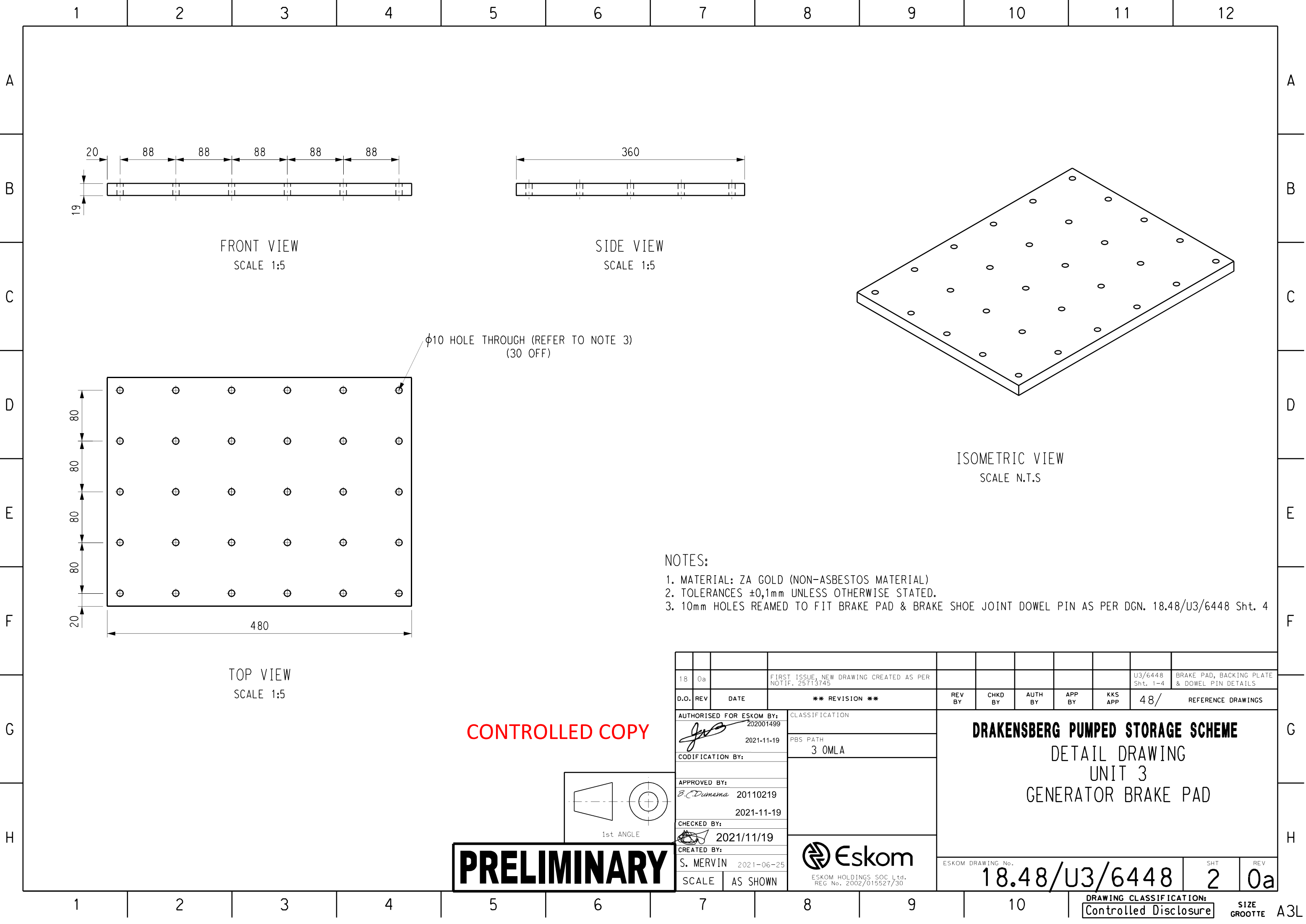
- NOTES:
- 1. BRAKE PAD TO BE GLUED ONTO BRAKE SHOE / BRAKE PAD BACKING PLATE WITH ARALDITE 64-1 (BRAKE BONDING ADHESIVE/PRIMER - FORMERLY KNOWN AS REDUX 64-1). ARALDITE 64-1 TO BE USED IN CONJUNCTION WITH ARALDITE 70 PRIMER.
 - 2. BRAKE PAD TO BE DOWELLED ONTO BRAKE SHOE / BRAKE PAD BACKING PLATE IN CONJUNCTION WITH GLUEING AS INDICATED IN NOTE 1.

CONTROLLED COPY



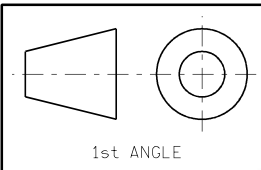
PRELIMINARY

18		0a	FIRST ISSUE, NEW DRAWING CREATED AS PER NOTIF. 25713746											U3/6448 Sht. 2-4		BRAKE PAD, BACKING PLATE & DOWEL PIN DETAILS	
D.O.		REV	DATE		** REVISION **					REV BY	CHKD BY	AUTH BY	APP BY	KKS APP	48/ REFERENCE DRAWINGS		
AUTHORISED FOR ESKOM BY:			CLASSIFICATION			DRAKENSBURG PUMPED STORAGE SCHEME ASSEMBLY DRAWING UNIT 3 GENERATOR BRAKE PAD & BACKING PLATE (10 ASSEMBLIES PER UNIT)											
202001499			D00101														
2021-11-12			PBS PATH														
			3 OMLA														
CODIFICATION BY:																	
APPROVED BY:			20110219														
B.C. Dumama			2021-11-19														
CHECKED BY:			2021/11/12														
CREATED BY:																	
S. MERVIN			2021-06-25														
SCALE		AS SHOWN		Eskom		ESKOM DRAWING No. 18.48/U3/6448											
				ESKOM HOLDINGS SOC. LTD. REG. No. 2002/015527/30		SHT 1											
						REV 0a											







- NOTES:
- 1. MATERIAL: ZA GOLD (NON-ASBESTOS MATERIAL)
 - 2. TOLERANCES $\pm 0,1\text{mm}$ UNLESS OTHERWISE STATED.
 - 3. 10mm HOLES REAMED TO FIT BRAKE PAD & BRAKE SHOE JOINT DOWEL PIN AS PER DGN. 18.48/U3/6448 Sht. 4

CONTROLLED COPY



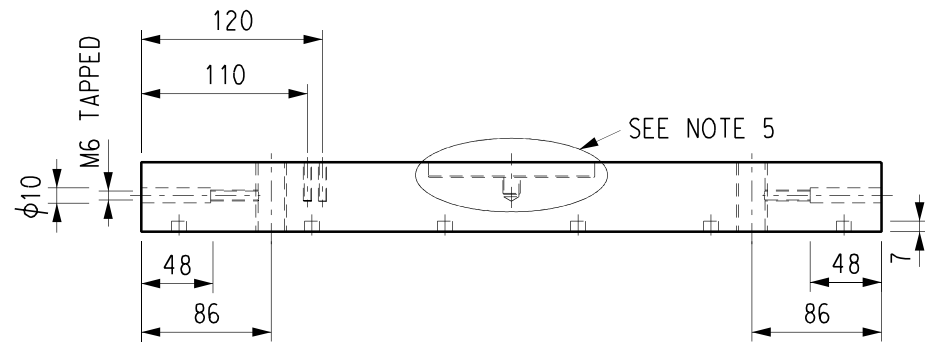
1st ANGLE

PRELIMINARY

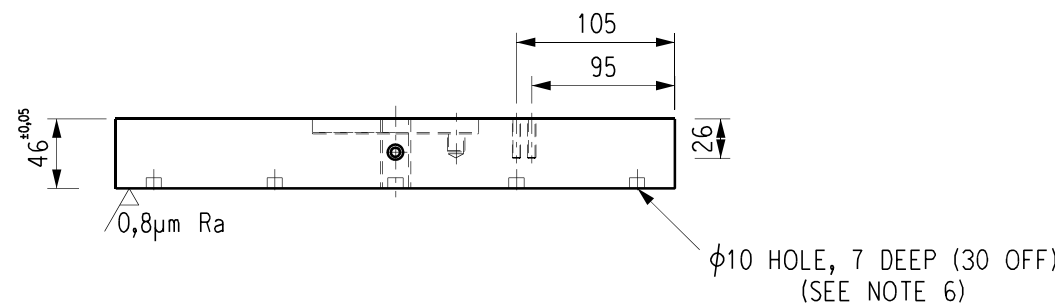
18	0a		FIRST ISSUE, NEW DRAWING CREATED AS PER NOTIF. 25713745							U3/6448 Sht. 1-4	BRAKE PAD, BACKING PLATE & DOWEL PIN DETAILS
D.O.	REV	DATE	** REVISION **	REV BY	CHKD BY	AUTH BY	APP BY	KKS APP	48/	REFERENCE DRAWINGS	
AUTHORISED FOR ESKOM BY:			CLASSIFICATION	DRAKENSBERG PUMPED STORAGE SCHEME DETAIL DRAWING UNIT 3 GENERATOR BRAKE PAD							
 202001499			PBS PATH								
2021-11-19			3 OMLA								
CODIFICATION BY:											
APPROVED BY:											
 20110219											
2021-11-19											
CHECKED BY:											
 2021/11/19											
CREATED BY:											
S. MERVIN 2021-06-25											
SCALE	AS SHOWN		 Eskom ESKOM HOLDINGS SOC Ltd. REG No. 2002/015527/30								
ESKOM DRAWING No.				18.48/U3/6448				SHT	2	REV	0a

DRAWING CLASSIFICATION:
Controlled Disclosure

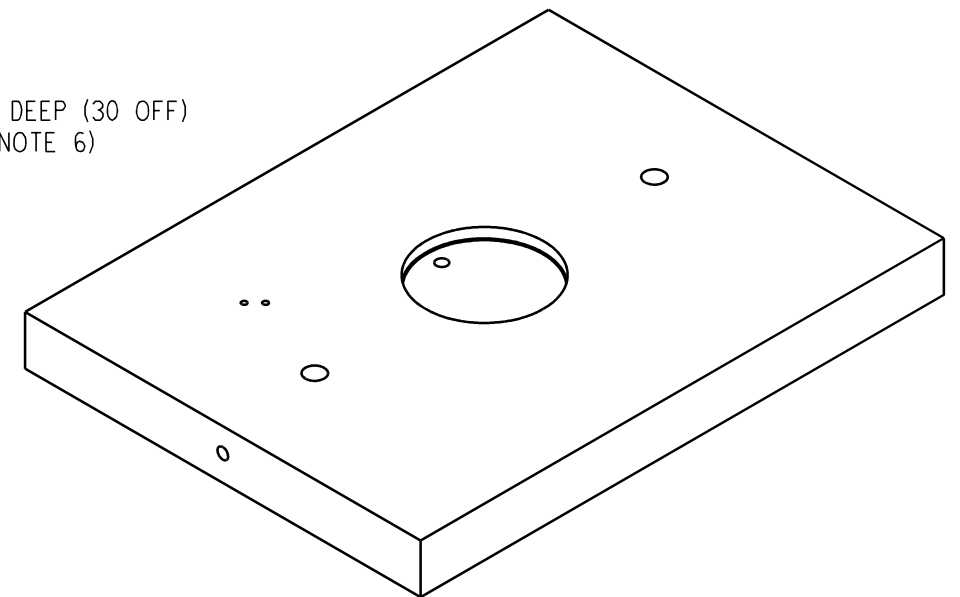
SIZE
GROOTTE A3L



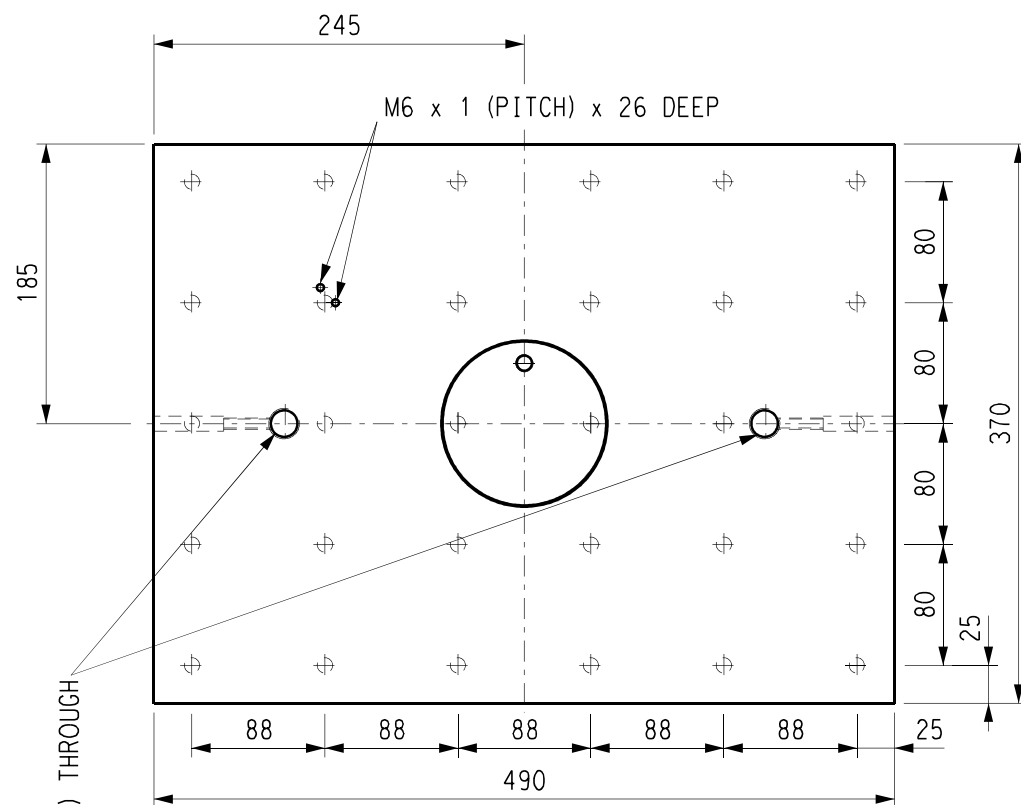
FRONT VIEW
SCALE 1:5



SIDE VIEW
SCALE 1:2



ISOMETRIC VIEW
SCALE N.T.S

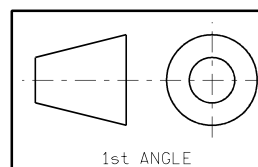


TOP VIEW
SCALE 1:5

NOTES:

1. MATERIAL: EN3A (BS 970:1955) / WERKSTOFF NR. 1.0402 / 070 M20 (070) (BS 970) / SAE/AISI 1020
2. SURFACE FINISHES TO BE 1,6µm Ra OR BETTER UNLESS OTHERWISE STATED.
3. TOLERANCES ±0,1mm UNLESS OTHERWISE STATED.
4. BREAK ALL SHARP EDGES WITH 1mm CHAMFER & REMOVE SLIVERS.
5. FOR BRAKE SHOE RECESS DETAILS, REFER TO DGN. 18.48/U3/6448 Sht. 4.
6. 10mm HOLES REAMED TO FIT BRAKE PAD & BRAKE SHOE JOINT DETAIL DOWEL PIN

CONTROLLED COPY



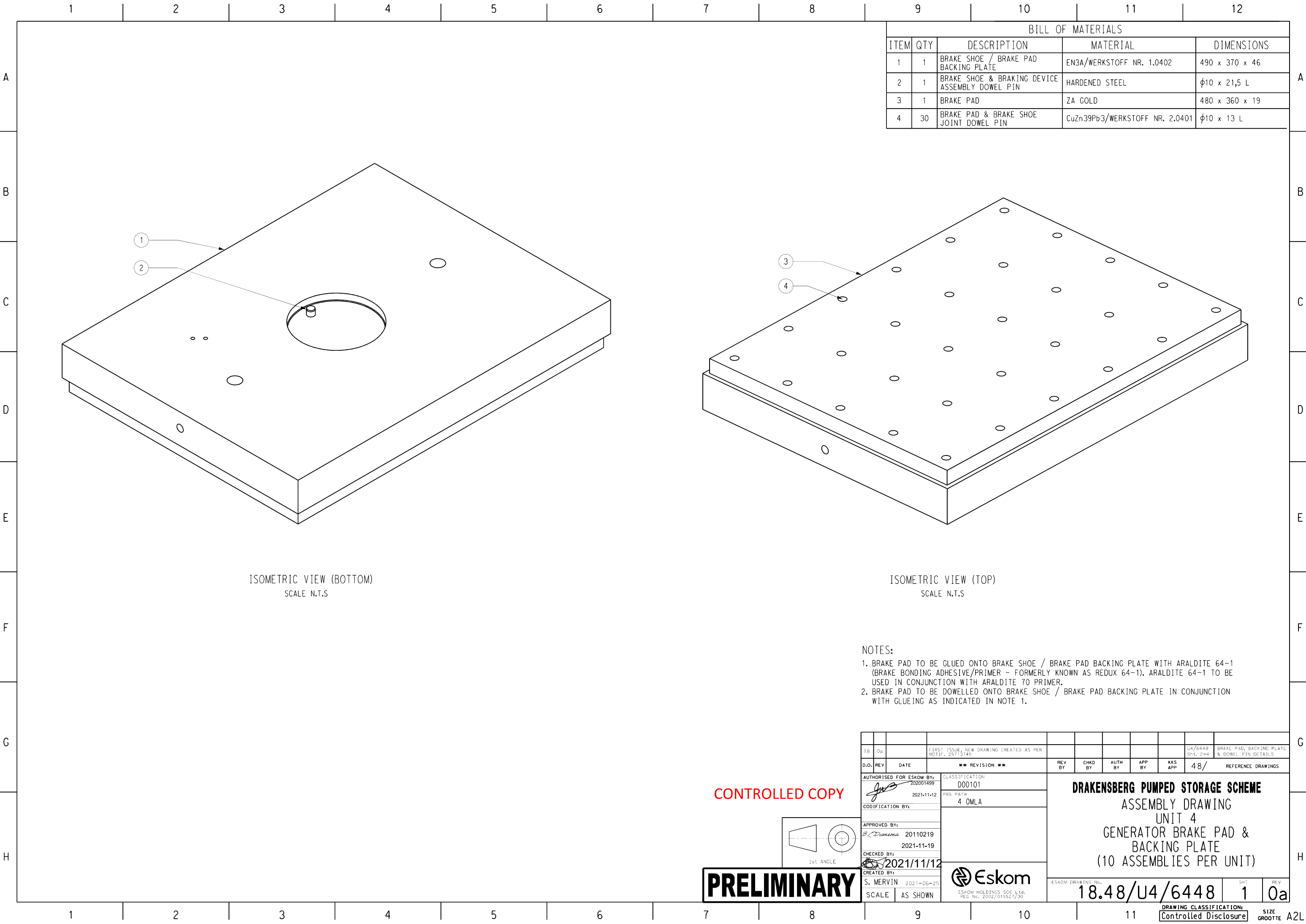
1st ANGLE

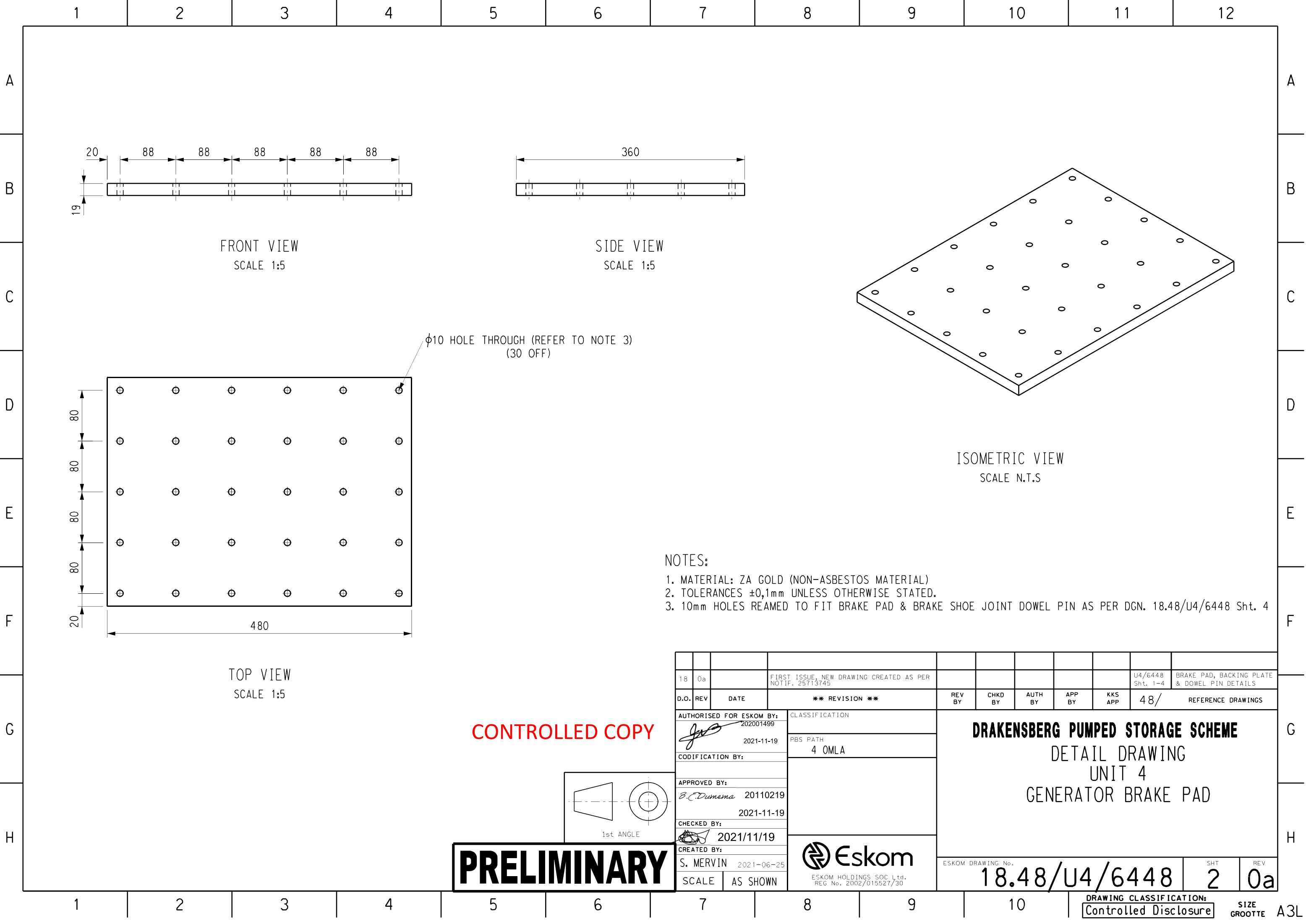
PRELIMINARY

18	0a	FIRST ISSUE, NEW DRAWING CREATED AS PER NOTIF. 25713745											U3/6448 Sht. 1-4	BRAKE PAD, BACKING PLATE & DOWEL PIN DETAILS	
D.O.	REV	DATE	** REVISION **				REV BY	CHKD BY	AUTH BY	APP BY	KKS APP	48/	REFERENCE DRAWINGS		
AUTHORISED FOR ESKOM BY:			202001499		2021-11-19		CLASSIFICATION		DRAKENSBURG PUMPED STORAGE SCHEME DETAIL DRAWING UNIT 3 GENERATOR BRAKE PAD BACKING PLATE						
CODIFICATION BY:					3 OMLA										
APPROVED BY:			B.C. Dumema		20110219										
CHECKED BY:			2021/11/19												
CREATED BY:			S. MERVIN		2021-06-25		Eskom		ESKOM HOLDINGS SOC. Ltd. REG No. 2002/015527/30						
SCALE		AS SHOWN		ESKOM DRAWING No. 18.48/U3/6448										SHT 3	REV 0a

DRAWING CLASSIFICATION:
Controlled Disclosure

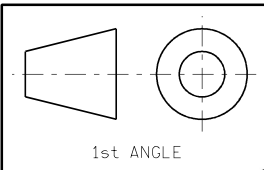
SIZE
GROOTTE A3L








- NOTES:
- 1. MATERIAL: ZA GOLD (NON-ASBESTOS MATERIAL)
 - 2. TOLERANCES $\pm 0,1\text{mm}$ UNLESS OTHERWISE STATED.
 - 3. 10mm HOLES REAMED TO FIT BRAKE PAD & BRAKE SHOE JOINT DOWEL PIN AS PER DGN. 18.48/U4/6448 Sht. 4

CONTROLLED COPY



1st ANGLE

PRELIMINARY

18	0a		FIRST ISSUE, NEW DRAWING CREATED AS PER NOTIF. 25713745							U4/6448 Sht. 1-4	BRAKE PAD, BACKING PLATE & DOWEL PIN DETAILS
D.O.	REV	DATE	** REVISION **	REV BY	CHKD BY	AUTH BY	APP BY	KKS APP	48/	REFERENCE DRAWINGS	
AUTHORISED FOR ESKOM BY:			CLASSIFICATION	<div>DRAKENSBERG PUMPED STORAGE SCHEME</div> <div>DETAIL DRAWING</div> <div>UNIT 4</div> <div>GENERATOR BRAKE PAD</div>							
<div>202001499</div> <div>2021-11-19</div>											
CODIFICATION BY:											
APPROVED BY:											
<div>B. C. Dumama</div> 20110219											
<div>2021-11-19</div>			PBS PATH	4 OMLA							
CHECKED BY:											
<div>2021/11/19</div>											
CREATED BY:			<div> Eskom</div> <div>ESKOM HOLDINGS SOC Ltd. REG No. 2002/015527/30</div>	ESKOM DRAWING No. 18.48/U4/6448							
S. MERVIN											
2021-06-25											
SCALE	AS SHOWN		SHT 2								
			REV 0a								

DRAWING CLASSIFICATION: Controlled Disclosure

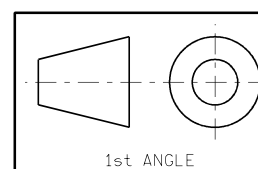
SIZE GROOTTE A3L



1. MATERIAL: EN3A (BS 970:1955) / WERKSTOFF NR. 1.0402 / 070 M20 (070) (BS 970) / SAE/AISI 1020
2. SURFACE FINISHES TO BE 1,6µm Ra OR BETTER UNLESS OTHERWISE STATED.
3. TOLERANCES ±0,1mm UNLESS OTHERWISE STATED.
4. BREAK ALL SHARP EDGES WITH 1mm CHAMFER & REMOVE SLIVERS.
5. FOR BRAKE SHOE RECESS DETAILS, REFER TO DGN. 18.48/U4/6448 Sht. 4.
6. 10mm HOLES REAMED TO FIT BRAKE PAD & BRAKE SHOE JOINT DETAIL DOWEL PIN

PRELIMINARY

CONTROLLED COPY

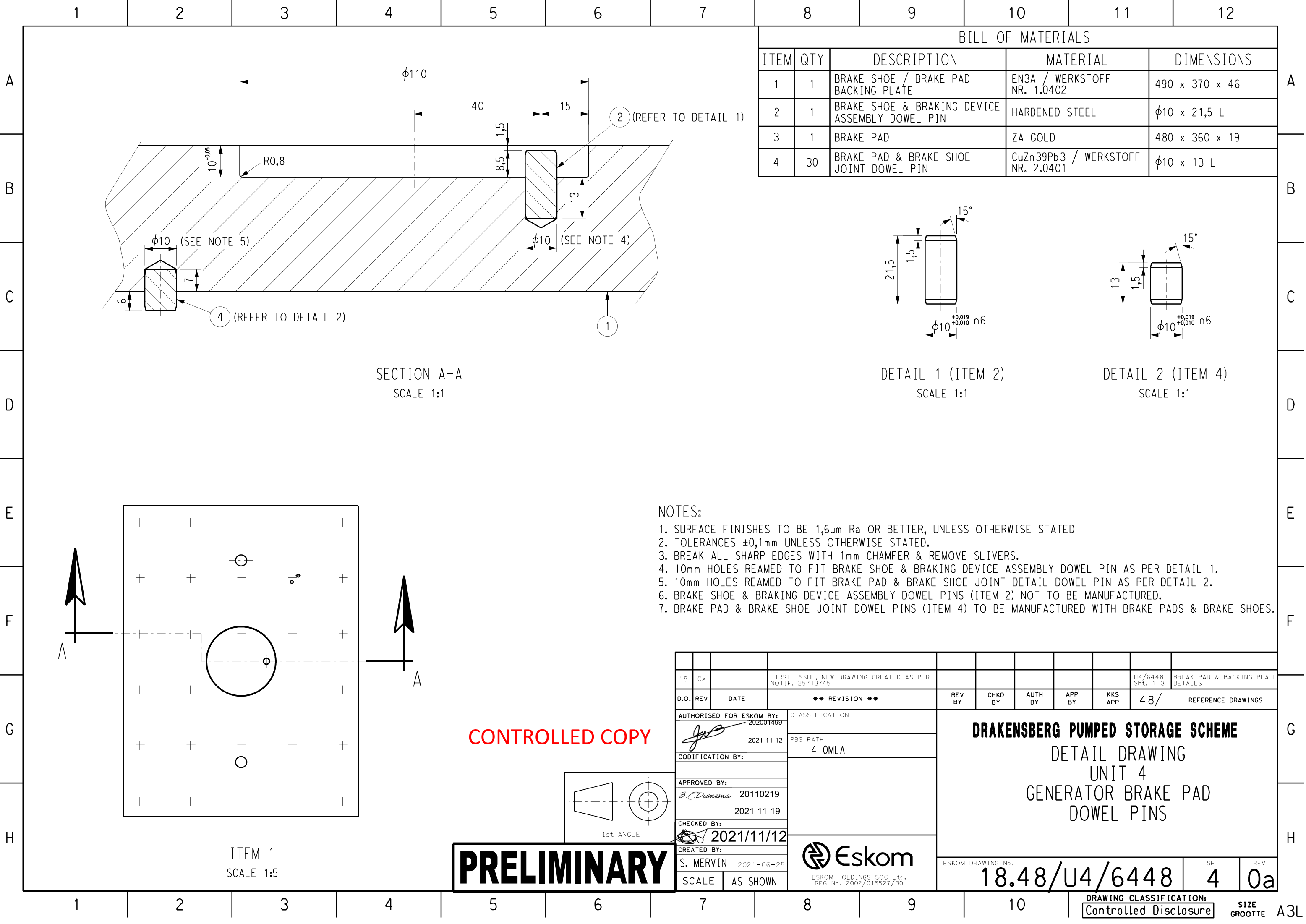


1st ANGLE

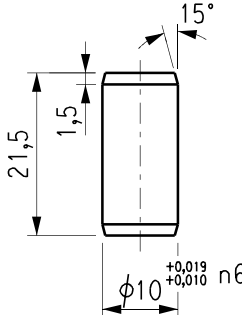
PRELIMINARY

DRAWING CLASSIFICATION:
Controlled Disclosure

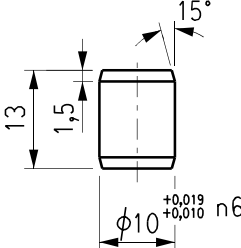
SIZE
ROOTTE A3L



BILL OF MATERIALS				
ITEM	QTY	DESCRIPTION	MATERIAL	DIMENSIONS
1	1	BRAKE SHOE / BRAKE PAD BACKING PLATE	EN3A / WERKSTOFF NR. 1.0402	490 x 370 x 46
2	1	BRAKE SHOE & BRAKING DEVICE ASSEMBLY DOWEL PIN	HARDENED STEEL	φ10 x 21,5 L
3	1	BRAKE PAD	ZA GOLD	480 x 360 x 19
4	30	BRAKE PAD & BRAKE SHOE JOINT DOWEL PIN	CuZn39Pb3 / WERKSTOFF NR. 2.0401	φ10 x 13 L







DETAIL 1 (ITEM 2)
SCALE 1:1

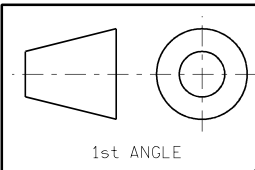


DETAIL 2 (ITEM 4)
SCALE 1:1

- NOTES:
1. SURFACE FINISHES TO BE 1,6μm Ra OR BETTER, UNLESS OTHERWISE STATED
 2. TOLERANCES ±0,1mm UNLESS OTHERWISE STATED.
 3. BREAK ALL SHARP EDGES WITH 1mm CHAMFER & REMOVE SLIVERS.
 4. 10mm HOLES REAMED TO FIT BRAKE SHOE & BRAKING DEVICE ASSEMBLY DOWEL PIN AS PER DETAIL 1.
 5. 10mm HOLES REAMED TO FIT BRAKE PAD & BRAKE SHOE JOINT DOWEL PIN AS PER DETAIL 2.
 6. BRAKE SHOE & BRAKING DEVICE ASSEMBLY DOWEL PINS (ITEM 2) NOT TO BE MANUFACTURED.
 7. BRAKE PAD & BRAKE SHOE JOINT DOWEL PINS (ITEM 4) TO BE MANUFACTURED WITH BRAKE PADS & BRAKE SHOES.

18	0a		FIRST ISSUE, NEW DRAWING CREATED AS PER NOTIF. 25713745							U4/6448 Sht. 1-3	BREAK PAD & BACKING PLATE DETAILS		
D.O.	REV	DATE	** REVISION **	REV BY	CHKD BY	AUTH BY	APP BY	KKS APP	48/	REFERENCE DRAWINGS			
AUTHORISED FOR ESKOM BY:  202001499				CLASSIFICATION				<div>DRAKENSBERG PUMPED STORAGE SCHEME</div> <div>DETAIL DRAWING</div> <div>UNIT 4</div> <div>GENERATOR BRAKE PAD</div> <div>DOWEL PINS</div>					
2021-11-12				PBS PATH 4 OMLA									
CODIFICATION BY:													
APPROVED BY:  20110219													
2021-11-19													
CHECKED BY:  2021/11/12													
CREATED BY: S. MERVIN 2021-06-25				 Eskom									
SCALE AS SHOWN				ESKOM HOLDINGS SOC Ltd. REG No. 2002/015527/30				ESKOM DRAWING No. 18.48/U4/6448				SHT 4	REV 0a

CONTROLLED COPY



PRELIMINARY